

LOCK Nr. 3371/Y 3372/Y 3373/Y 3374/Y

6 LEVERS

8 LEVERS

NO PLUG S (1)

WITH PLUG S (1)

Y's VARIANTS

RIGHT HAND

LEFT HAND

UNILATERAL-REMOVABLE KEY (2) (4)

UNILATERAL-UNREMOVABLE KEY (2) (5)

BILATERAL-REMOVABLE KEY (3) (4)

1

2

3

5

6

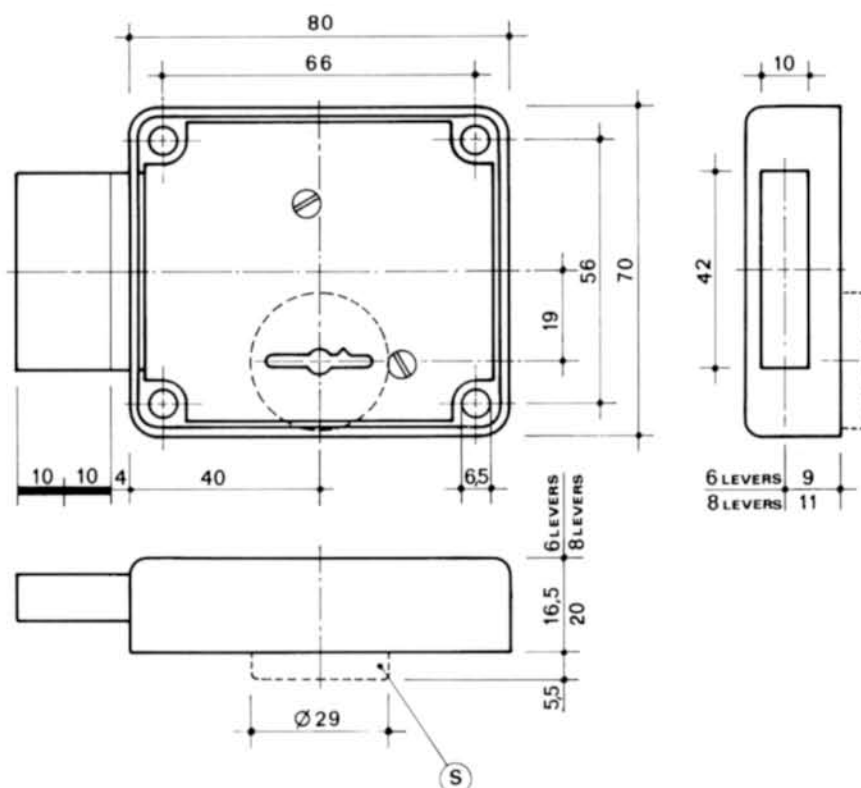
7

### LEVERS LOCK

- 2 KEY TURNS

- 6-8 LEVERS

SEE DEVICE L2



### LOCK SUPPLIED WITH

- 2 KEYS L = 34

- 2 KEYS L = 20  
FOR THE 6 LEVERS  
UNILATERAL LOCKS

### OPTIONALS

- FLAT KEYHOLE COVER
- GUIDING KEYHOLE COVER
- MOUNTING PLATE  
(TO BE SOLDERED)
- ANTIDRILLING SHIELD

### NOTES

- (1) SEE "S" ON DRAWING
- (2) KEY ENTERS FROM ONE SIDE ONLY
- (3) KEY ENTERS FROM BOTH SIDES
- (4) KEY REMOVABLE WHEN LOCK IS OPEN
- (5) KEY UNREMOVABLE WHEN LOCK IS OPEN

### BLANK KEYS VARIANTS:

- NO NAME (NO CHARGE)
- CUSTOMER'S NAME:  
NO CHARGE FOR MIN.  
250 LOCKS (500 KEYS)  
COIN TO BE PAYED.

UNDETACHABLE  
COMPOSED KEYS WITH  
CHROME PLATED BRASS  
TUBE.