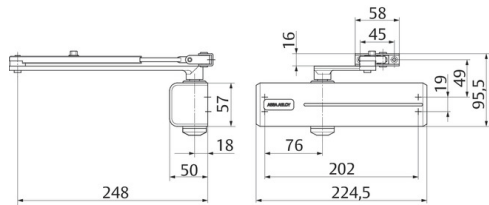


## Rack and pinion door closer with link arm



## Rack and pinion door closer with link arm

## Product description

- Rack and pinion door closer with link arm
- Certified in compliance with EN 1154, size 2/3/4
- For single action doors up to 1100 mm wide

## Characteristics Rack and pinion door closer with link arm

- Can be used for left and right-handed doors
- Suitable for fire and smoke protection doors
- Closing speed, latching speed and backcheck continuously adjustable using regulating valves
- Thermodynamic valves for consistent performance
- Closing force configurable
- Opening angle up to 180° (105° in mounting position EN size 4)
- Standard colours: silver EV1; white, similar to RAL9016; brown, similar to RAL8014; black, similar to RAL9005

## Note

- Not for use on fire and smoke protection doors in Germany!

## Technical data

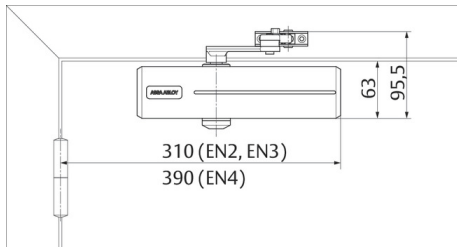
Closing force	EN 2/3/4
Door width up to	1100 mm
Suitable for fire doors	Yes
Handing	Left / right handed
Closing speed	Variable between 180°-15°
Latching speed	Variable between 15°-0°
Backcheck	Variable above 75°
Certified in compliance with	EN 1154
CE marking for building products	Yes
Length	220 mm
Height	52 mm
Depth	47 mm
Color	Brown, similar to RAL8014
Net_weight	1,6 kg

Article number DC120-----8014

EAN-Number 4042203421950

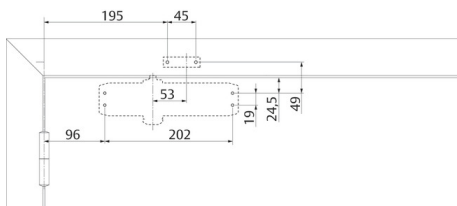
view construction

Required space on doors



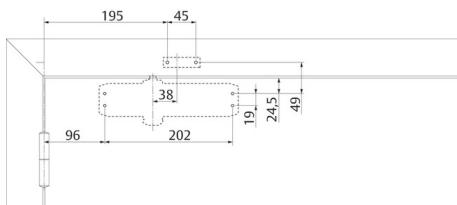
Left handed shown in diagram  
Right handed is the reverse

Installation dimensions



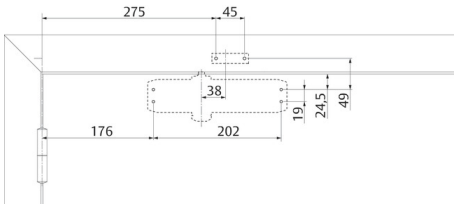
Installation dimensions EN2

Installation dimensions



Installation dimensions EN3

## Installation dimensions



## Installation dimensions EN4